

Service Document Exchange Set

GDP 1100/1
GDP 1100/2

Service Manual
Sicherheit
Safety

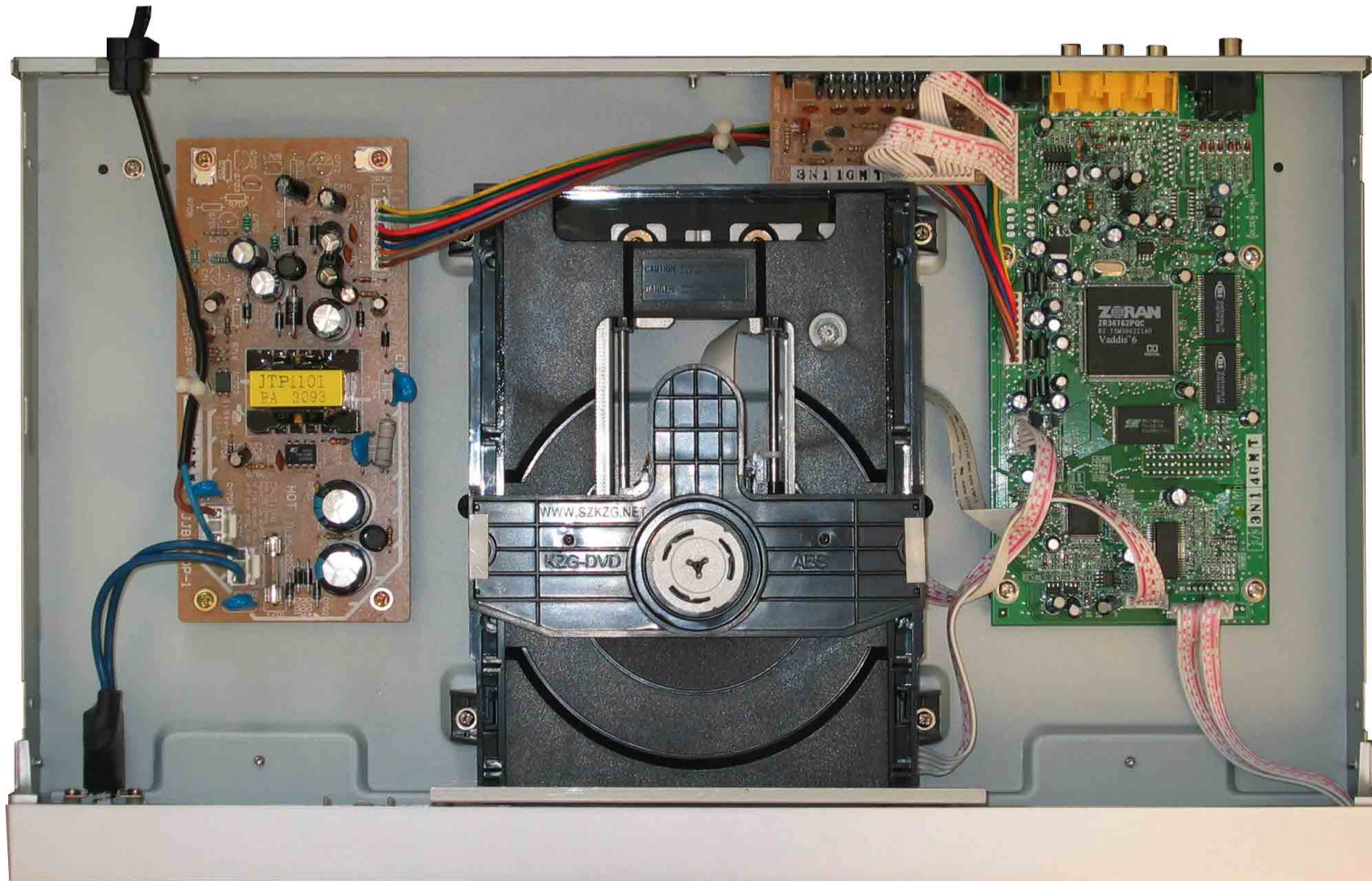
Materialnr./Part No.
720108000001

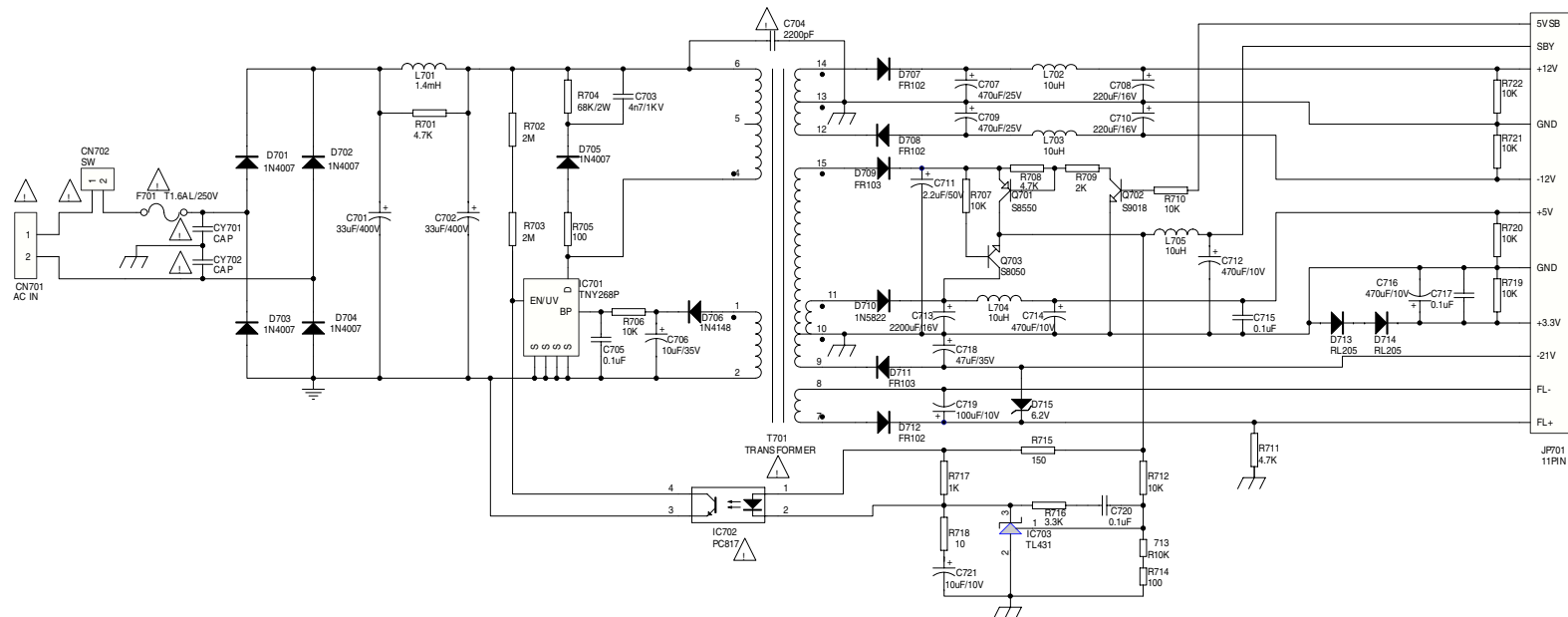
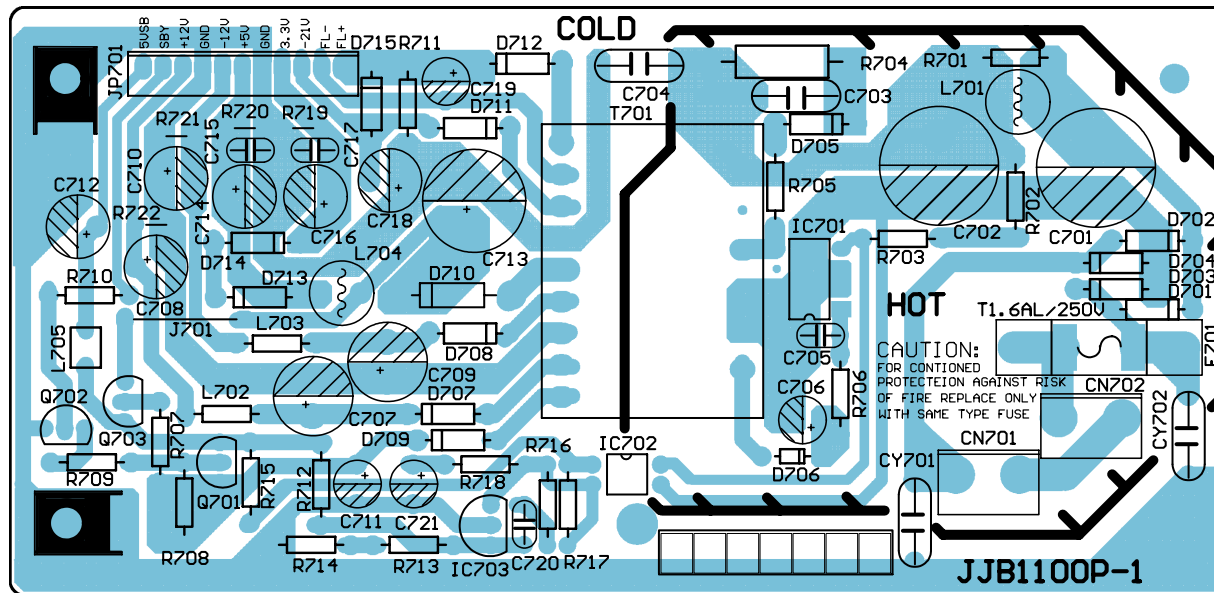


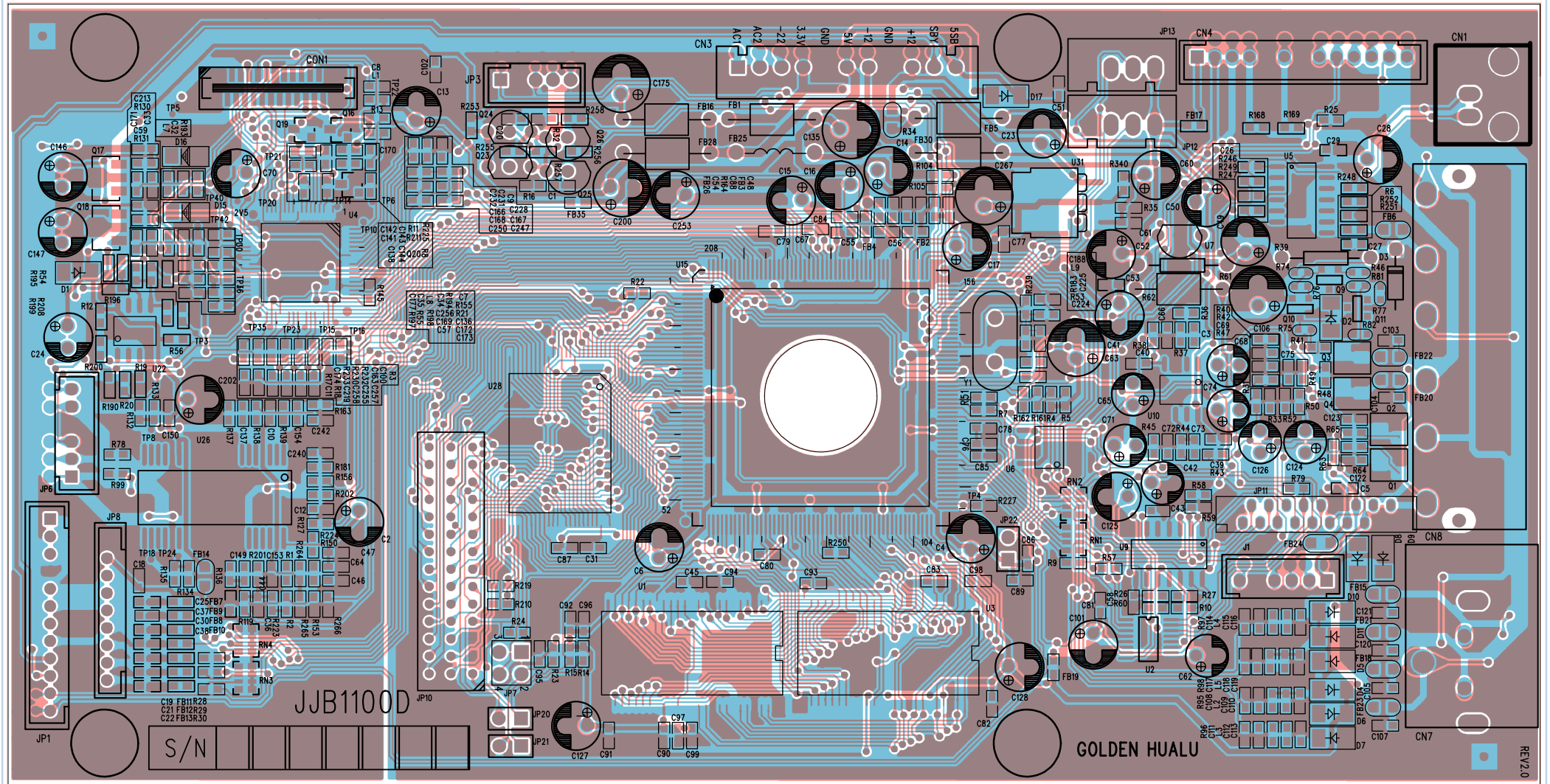
Es gelten die Vorschriften und Sicherheitshinweise gemäß dem Service Manual "Sicherheit", Materialnummer 720108000001, sowie zusätzlich die eventuell abweichenden, landesspezifischen Vorschriften!

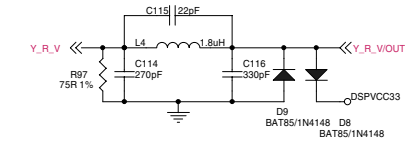
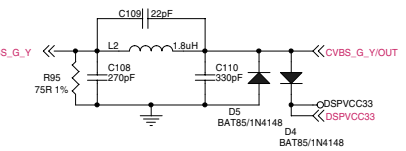
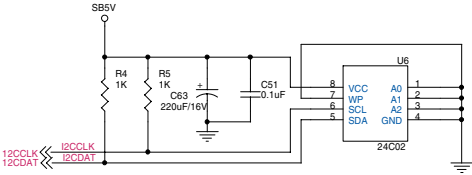
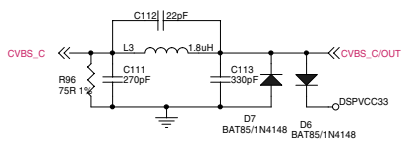
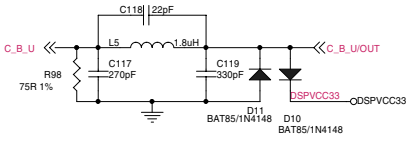
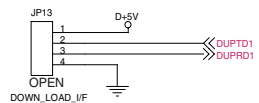
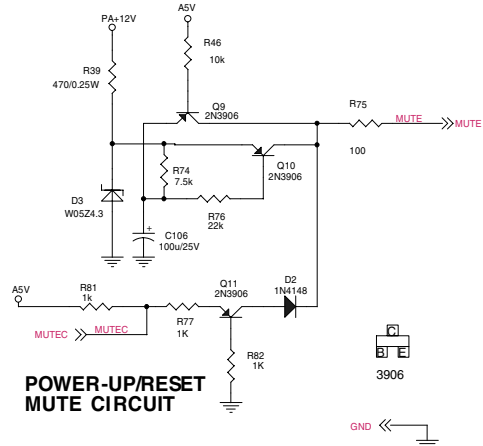
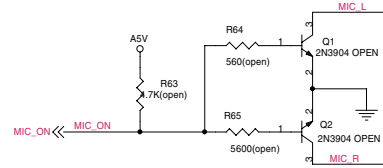
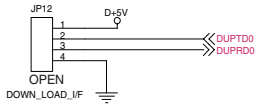
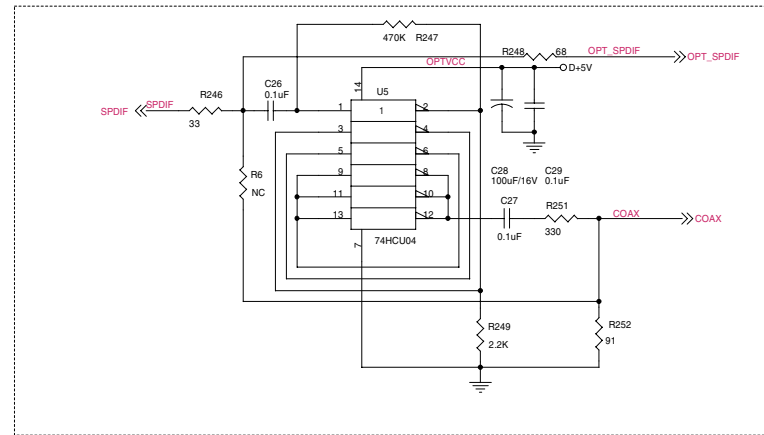
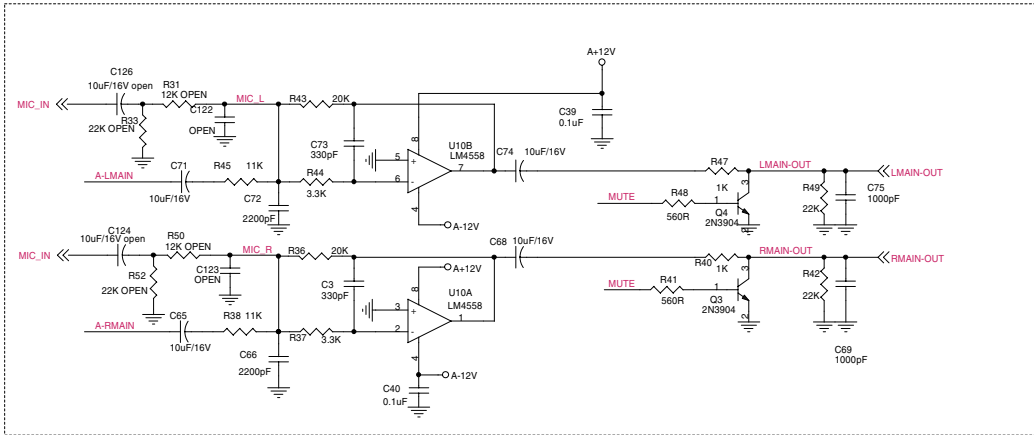


The regulations and safety instructions shall be valid as provided by the "Safety" Service Manual, part number 720108000001, as well as the respective national deviations.

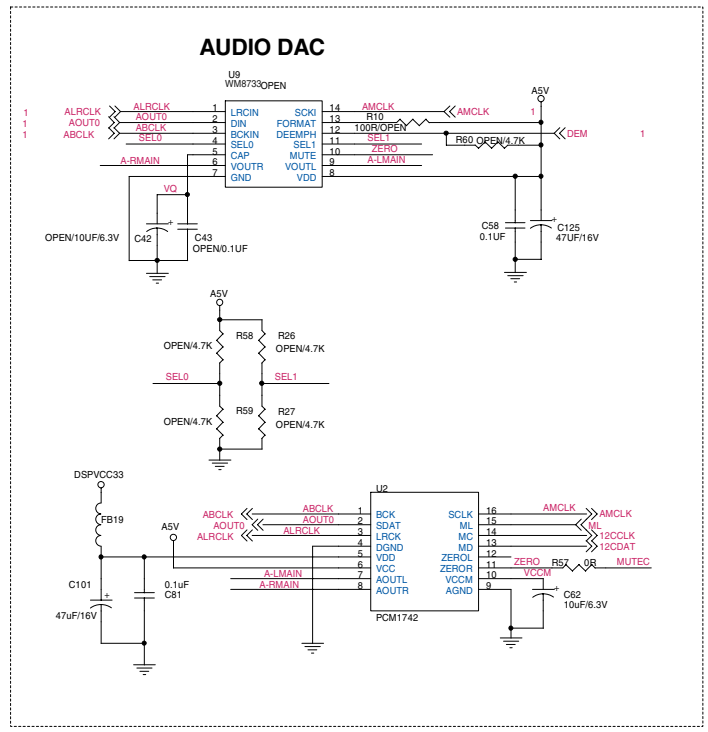


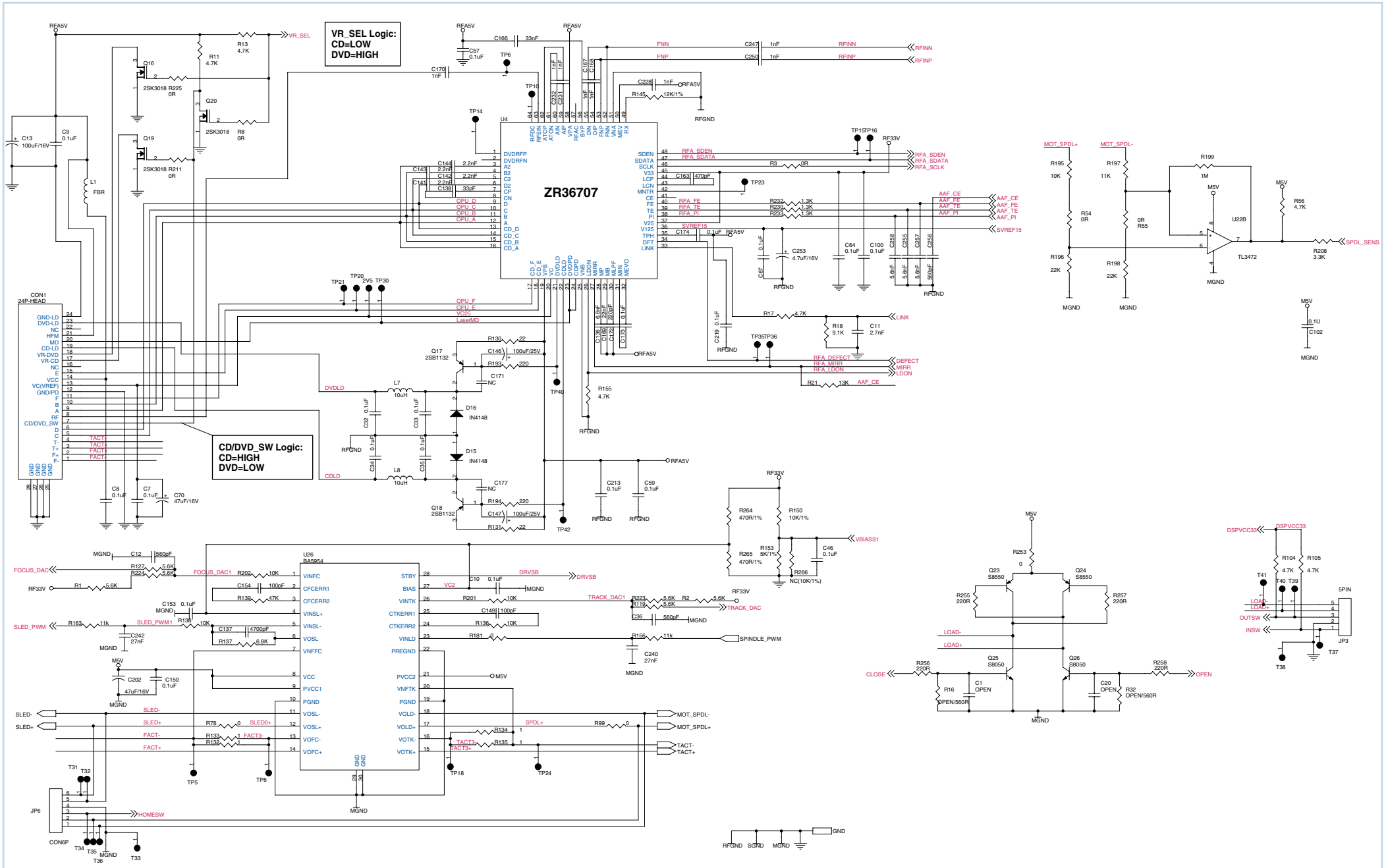


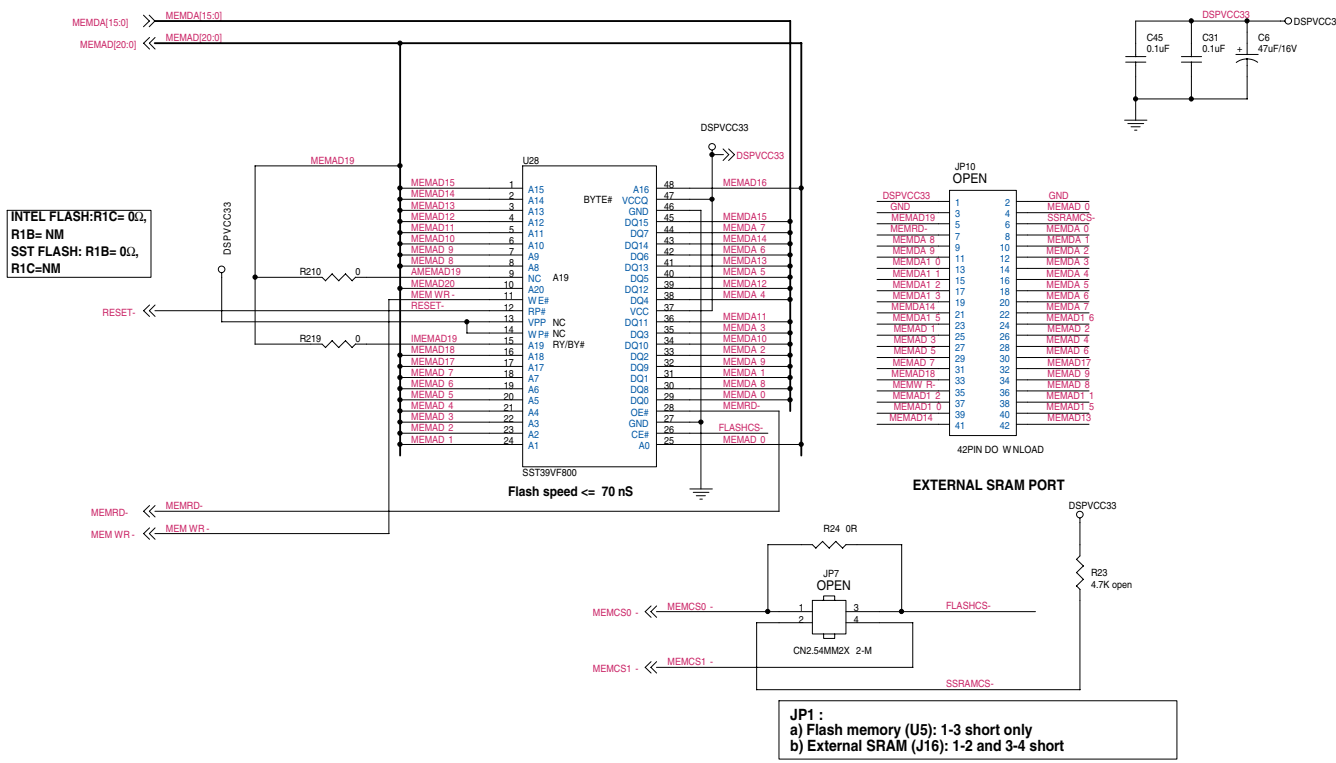


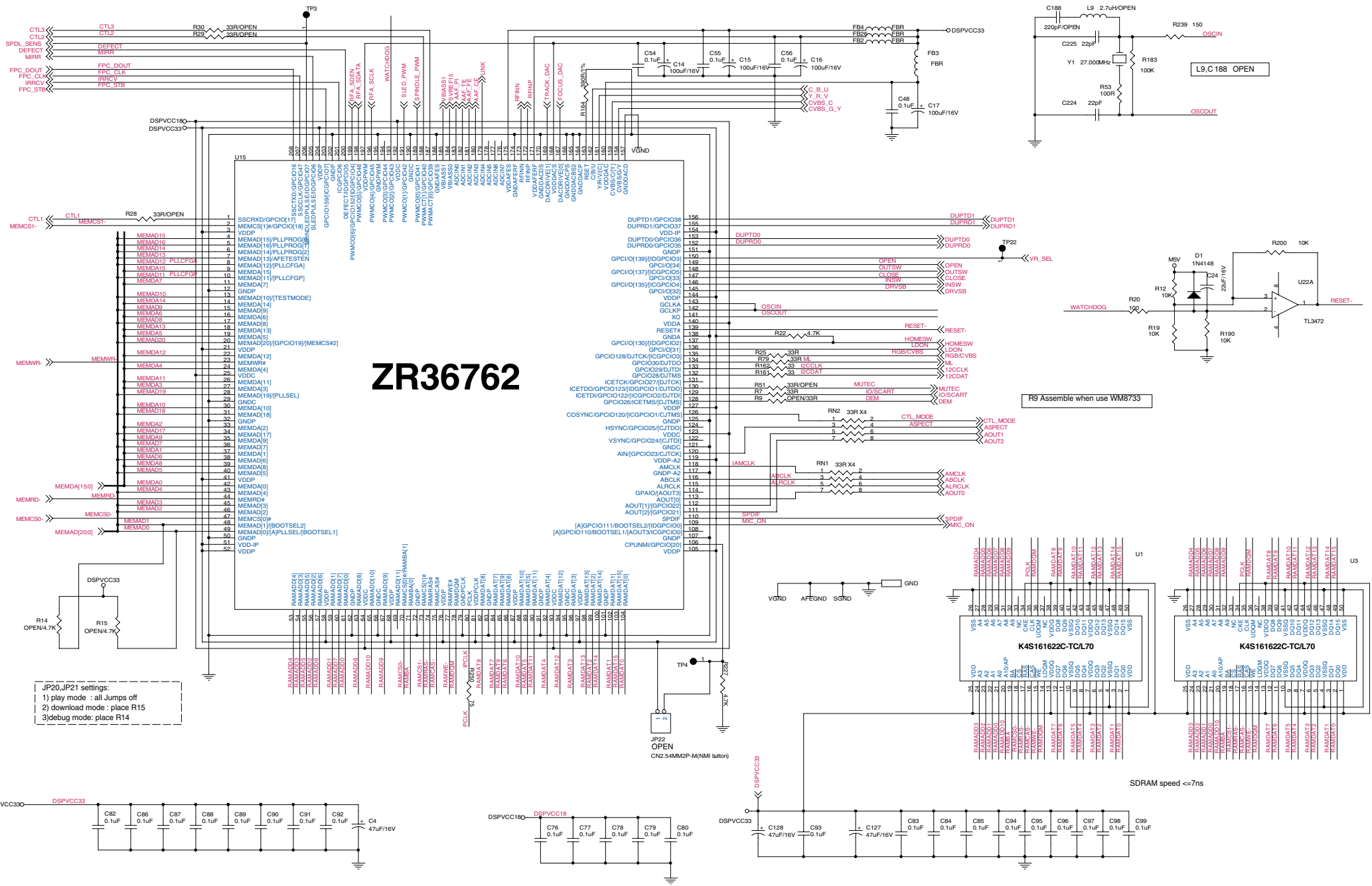


VIDEO POST FILTER CIRCUIT (FOUR FILTERS)

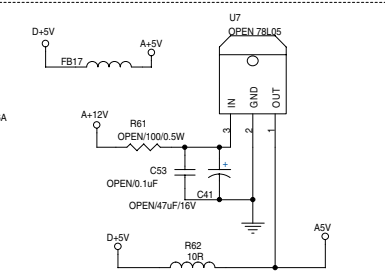
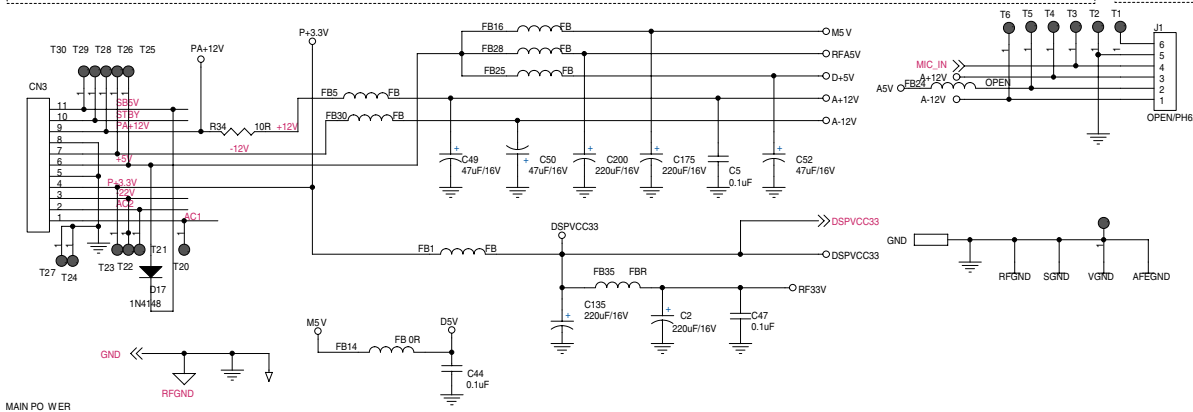
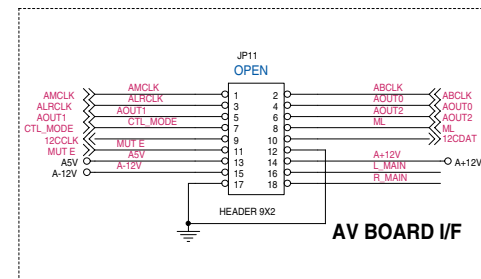
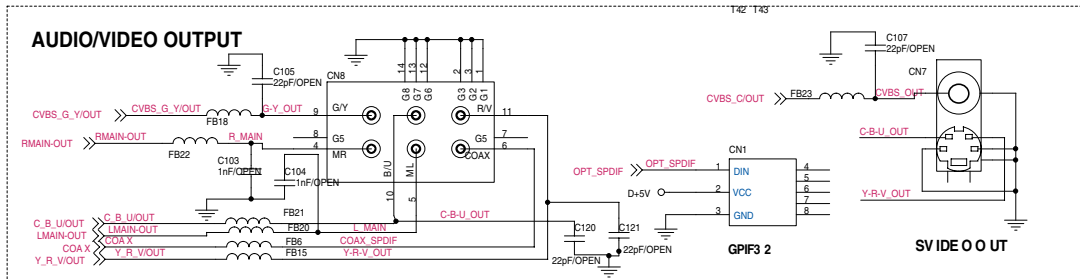
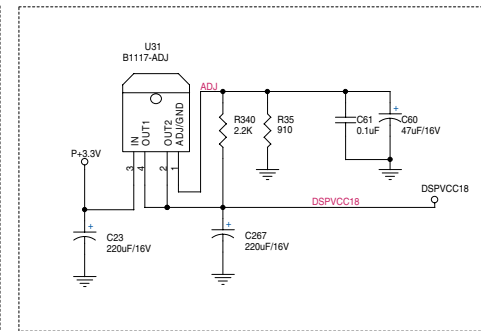
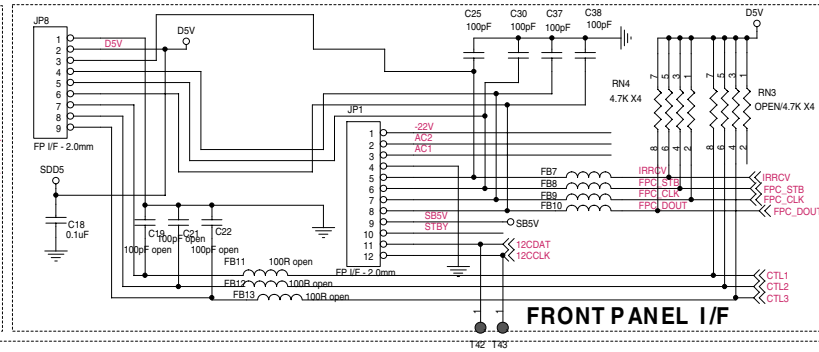
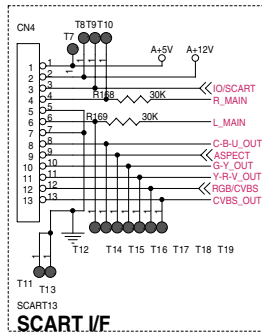


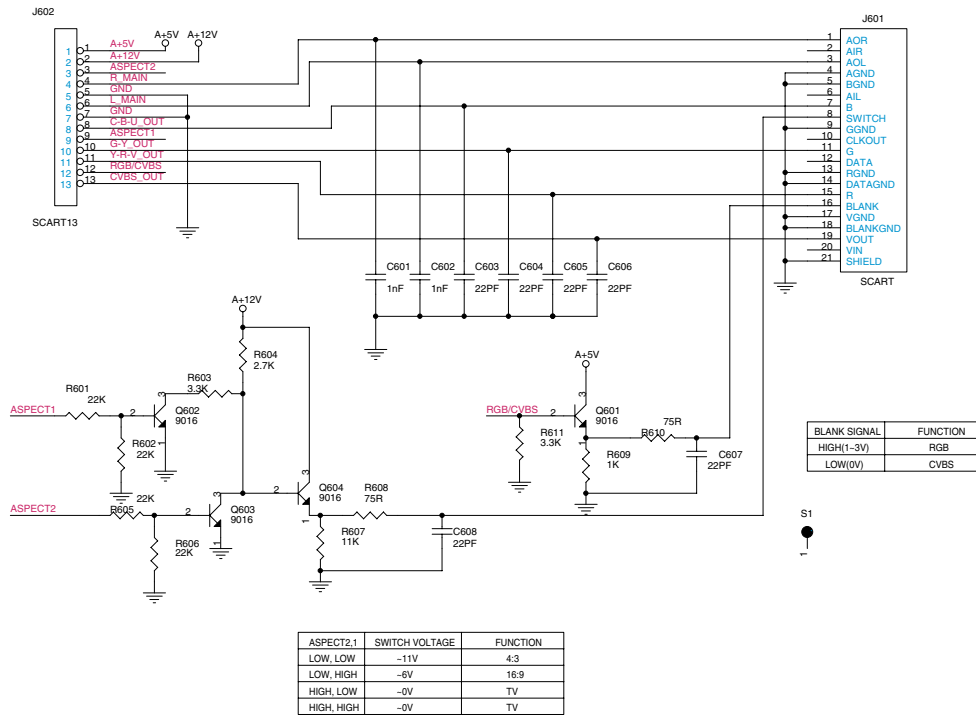
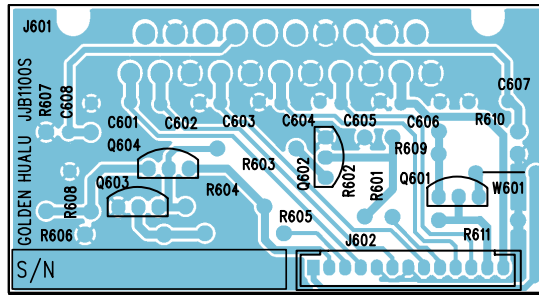


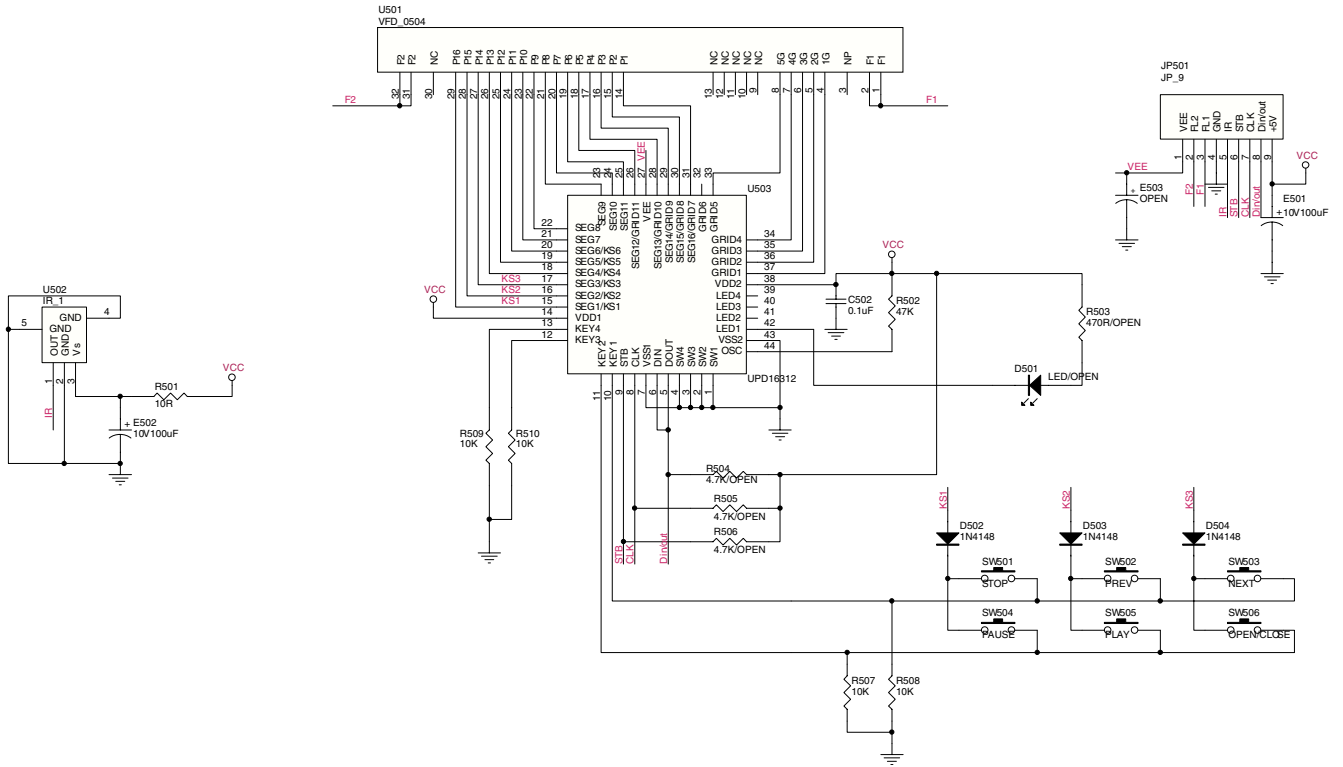
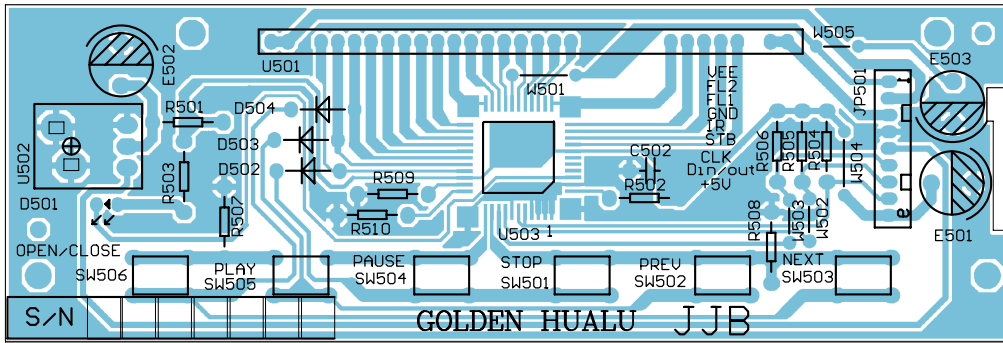




ZR36762







GRUNDIG

Ersatzteilliste Spare Parts List

DVD

11 / 2003

GDP 1100/1 GDP 1100/2

MATERIAL-NR. / PART NO.: 774010605100 BESTELL-NR. / ORDER NO.: GMK2100
MATERIAL-NR. / PART NO.: 774010604100 BESTELL-NR. / ORDER NO.: GMK2300

POS. NR. POS. NO.	ABB. FIG.	MATERIAL-NR. PART NUMBER	ANZ. QTY.	BEZEICHNUNG ①	DESCRIPTION ②
		774010605100		GDP 1100/1	GDP 1100/1
		774010645100		GDP 1100/2	GDP 1100/2
		774010605100		GDP 1100/1 / 2 TAUSCHGERAET	GDP 1100/1 / 2 EXCHANGE SET
0003.000		720117133300		FERNBEDIENUNG TP 85 D	REMOTE CONTROL TP 85 D
		720116033000		BEDPIENUNGSANLEITUNG GDP1100/1, D	INSTRUCTION MANUAL GDP1100/1, D
		720116033100		BEDPIENUNGSANLEITUNG GDP1100/1, I	INSTRUCTION MANUAL GDP1100/1, I
		720116033200		BEDPIENUNGSANLEITUNG GDP1100/1, F	INSTRUCTION MANUAL GDP1100/1, F
		720116033300		BEDPIENUNGSANLEITUNG GDP1100/1, NL	INSTRUCTION MANUAL GDP1100/1, NL
		720116033400		BEDPIENUNGSANLEITUNG GDP1100/1, PL	INSTRUCTION MANUAL GDP1100/1, PL
		720116033500		BEDPIENUNGSANLEITUNG GDP1100/2, GB	INSTRUCTION MANUAL GDP1100/2, GB
		720116033600		BEDPIENUNGSANLEITUNG GDP1100/2, DK	INSTRUCTION MANUAL GDP1100/2, DK
		720116033700		BEDPIENUNGSANLEITUNG GDP1100/2, S	INSTRUCTION MANUAL GDP1100/2, S

HINWEIS !

IM DEFEKTFALL SENDEN SIE BITTE
IHR GERAET ZUR EINZELREPARATUR
AN FOLGENDE ADRESSE:
GRUNDIG AG
KD SUED
BEUTHENERSTR. 65
D-90471 NUERNBERG

NOTE !

IN CASE OF DEFECT PLEASE SEND
YOUR SET FOR REPAIR TO THE
FOLLOWING ADDRESS:
GRUNDIG AG
KD SUED
BEUTHENERSTR. 65
D-90471 NUERNBERG

Es gelten die Vorschriften und Sicherheitshinweise gemäß dem Service Manual "Sicherheit", Mat.-Nummer 720108000000, sowie zusätzlich die eventuell abweichenden, landesspezifischen Vorschriften!



The regulations and safety instructions shall be valid as provided by the "Safety" Service Manual, part number 720108000000, as well as the respective national deviations.

ÄNDERUNGEN VORBEHALTEN / SUBJECT TO ALTERATION